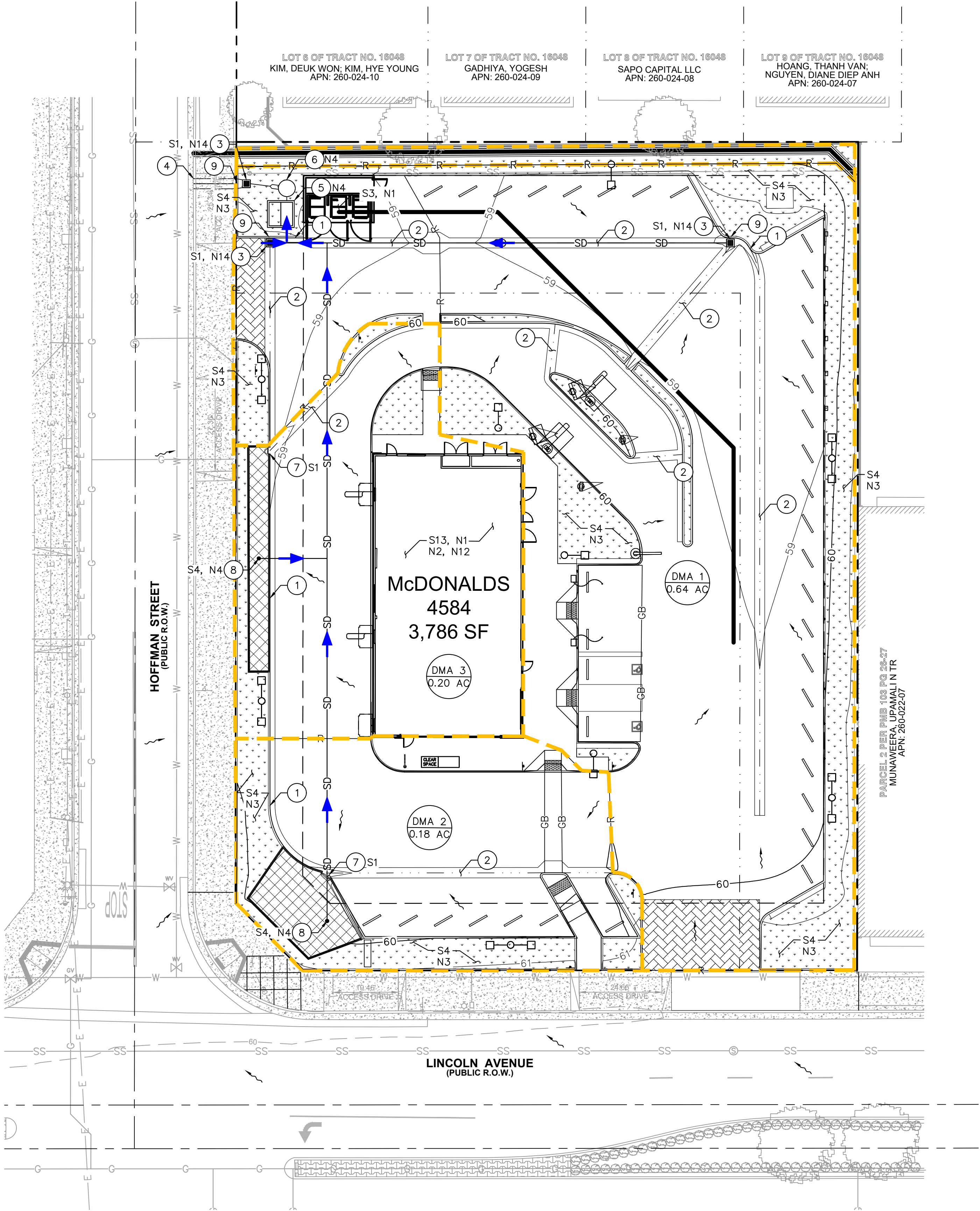


Drawing name: K:\ORA\_LDEV\McDonalds\194015056 - Buena Park (4-5199)\CADD\Exhibits\Reports\WQMP\WQMP Plan.dwg 1 - Preliminary WQMP Plan Oct 09, 2025 7:37pm by: JennySheng

This document, together with the concepts and designs presented herein, is intended only for the specific purpose and client for which it was prepared. Reuse of and improper reliance on this document without written authorization and adaptation by Kimley-Horn and Associates, Inc. shall be without liability to Kimley-Horn and Associates, Inc.



LEGEND

- CENTERLINE
- PROPERTY LINE
- RIGHT-OF-WAY LINE
- EASEMENT / SETBACK LINE
- LOT LINE
- DRAINAGE MANAGEMENT BOUNDARY
- PROPOSED STORM DRAIN PIPE
- GRADE BREAK LINE
- RIDGE LINE
- FLOW LINE
- PROPOSED CATCH BASIN
- PROPOSED MODULAR WETLAND SYSTEM
- PROPOSED STORM SUMP PUMP
- DIRECTION OF WATER FLOW
- DIRECTION OF PIPE FLOW
- LANDSCAPE AREA
- BIORETENTION BASIN
- DRAINAGE AREA LABEL

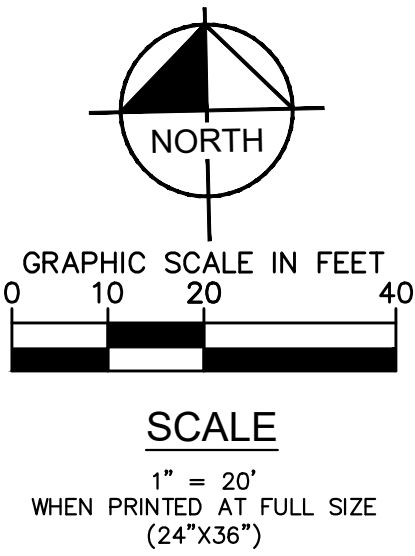
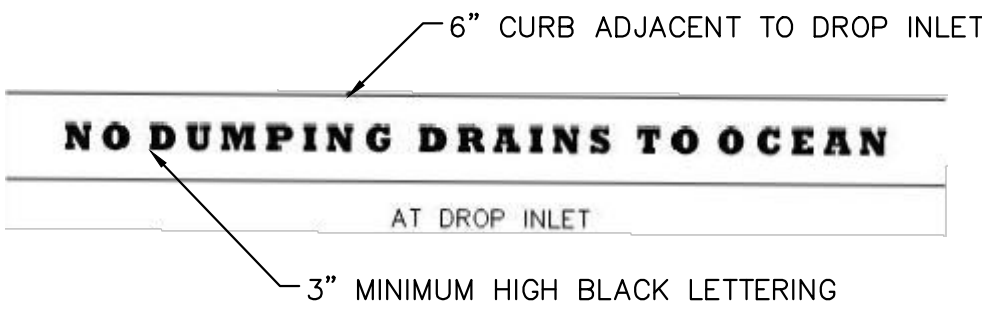
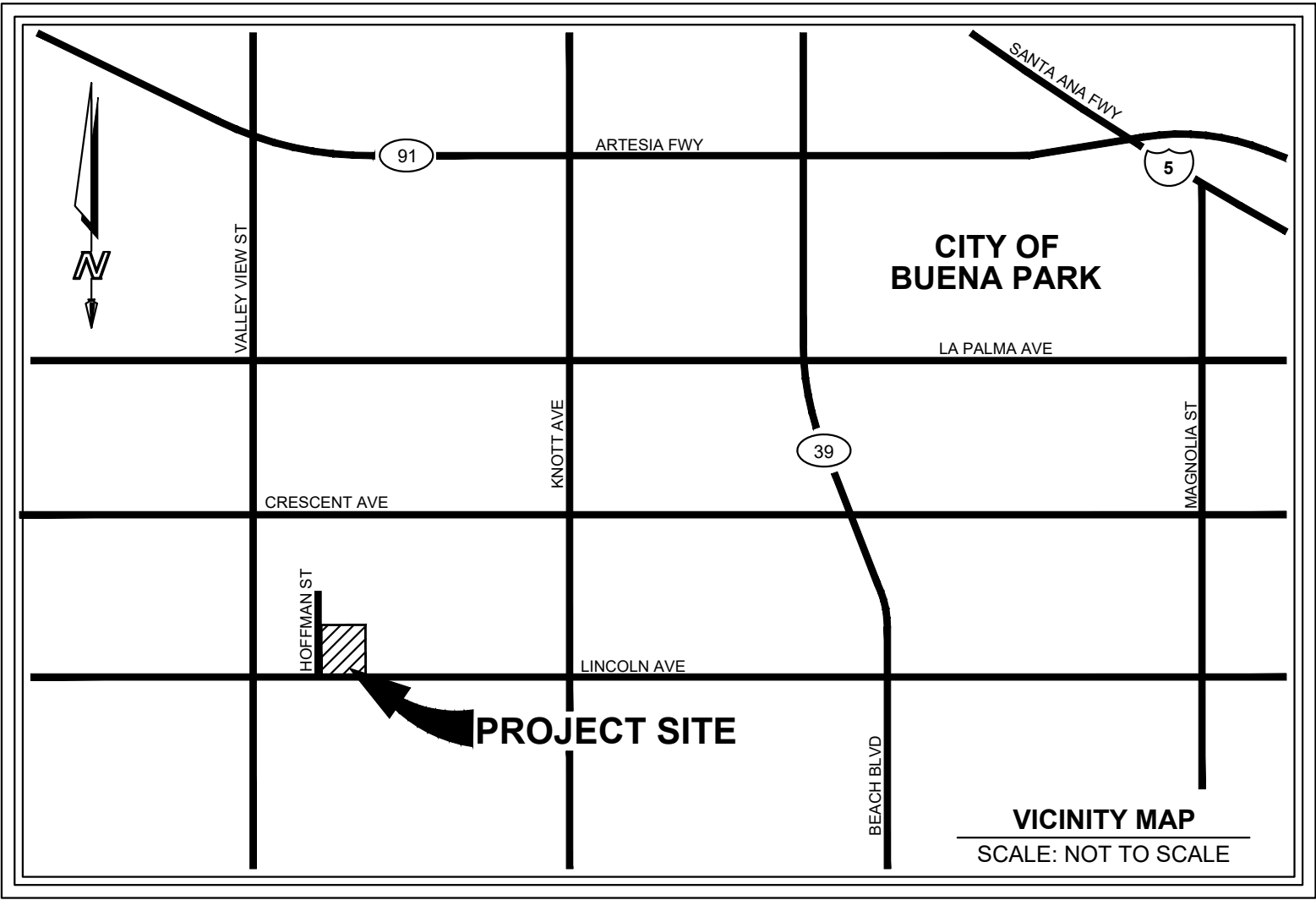
GRADING AND DRAINAGE NOTES

- 1 PROPOSED CONCRETE CURB AND GUTTER.
- 2 PROPOSED 3.0' WIDE CONCRETE VALLEY GUTTER.
- 3 24" X 24" DROP INLET WITH CATCH BASIN FILTER INSERT FOR TRASH CAPTURE.
- 4 PROPOSED 3.0' WIDE PARKWAY DRAIN THROUGH CURB FACE.
- 5 PROPOSED MODULAR WETLAND SYSTEM.
- 6 PROPOSED PUMP.
- 7 PROPOSED 2.0' WIDE CURB CUT.
- 8 PROPOSED BIORETENTION BASIN WITH OVERFLOW DEVICE AND NO UNDERDRAIN.
- 9 INSTALL "NO DUMPING DRAINS TO OCEAN" STENCIL ON CURB ADJACENT TO CATCH BASIN PER DETAIL HEREON.

WQMP BMP'S

DMA #	TOTAL DRAINAGE AREA (SF)	IMPERVIOUS AREA (SF)	PERVIOUS AREA (SF)	DESIGN CAPTURE VOLUME (CF)	STRUCTURAL BMP ID#	BMP CLASSIFICATION	BMP PROVIDED	LATITUDE	LONGITUDE	DESIGN FLOW RATE (CFS)	PROVIDED FLOW RATE (CFS)
1	28652	23244	5408	1336	MWS-1	BIOTREATMENT	MWS-L-8-8-V	33.833	-118.025	0.198	0.231
2	7671	5728	1943	725	BIO-1	INFILTRATION	BIORETENTION	33.831	-118.024	-	-
3	8722	7588	1134	488	BIO-2	INFILTRATION	BIORETENTION	33.832	-118.025	-	-
TOTAL	45045	36560	8485	2549	-	-	-	-	-	-	-

SOURCE CONTROL BMP'S	
BMP ID	BMP DESCRIPTION
S1	STORM DRAIN STENCILING AND SIGNAGE → ALL SD GRATED INLETS, CURB CUTS (TYP.)
S3	REFUSE / TRASH COLLECTION AREAS
S4	LANDSCAPE / OUTDOOR PESTICIDE USE
S13	WASH WATER CONTROL FOR FOOD PREPARATION AREAS
N1	EDUCATION FOR PROPERTY OWNERS, TENANTS, AND OCCUPANTS (ENTIRE SITE)
N2	ACTIVITY RESTRICTIONS (ENTIRE SITE)
N3	COMMON AREA LANDSCAPE MANAGEMENT
N4	BMP MAINTENANCE
N5	TITLE 22 CCR COMPLIANCE (ENTIRE SITE)
N10	UNIFORM FIRE CODE IMPLEMENTATION (ENTIRE SITE)
N11	COMMON AREA LITTER CONTROL (ENTIRE SITE)
N12	EMPLOYEE TRAINING (ENTIRE SITE)
N14	COMMON AREA CATCH BASIN INSPECTION
N15	STREET SWEEPING PRIVATE STREETS AND PARKING LOTS



Kimley»Horn

180 EAST OCEAN BLVD, SUITE 1200  
LONG BEACH, CA 90802  
(562) 549-2200

PREPARED UNDER THE DIRECT SUPERVISION OF:

AMELIA BELTRAN, R.C.E., NO. 87468  
DATE: EXP. 09/30/2027



Know what's below.  
Call before you dig.

GRADII					WQMP EXHIBIT		A 90602		REFERENCES:	
REVISIONS					CHECKED: AMELIA BELTRAN		GP-		REV. NO.	
NO.	DATE	BY	DESCRIPTION	APP.	RECOMMENDED:					
					APPROVED:		SHEET 1 OF 1			
					BENCHMARK: BASED ON NAVD 1988 DATUM, AND IS A SET MAG NAIL AND SHINER LOCATED NEAR THE SOUTHWEST CORNER OF PARCEL 1. ELEVATION = 60.41 FEET					