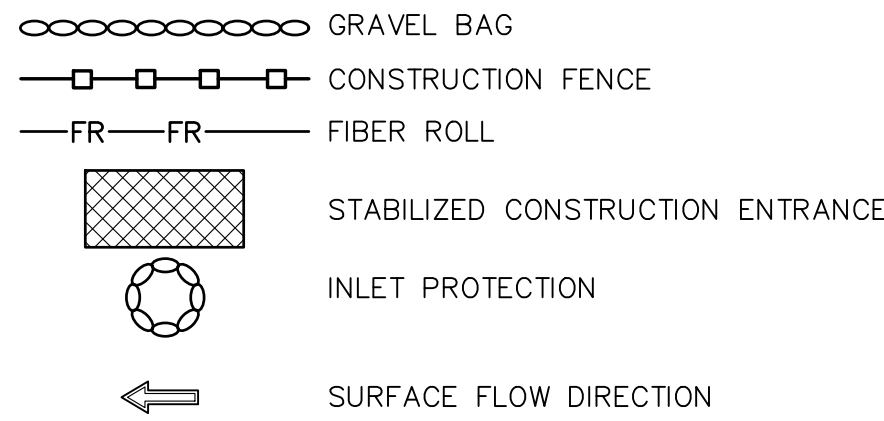


LEGEND



EROSION CONTROL AND SEDIMENT CONTROL GENERAL NOTES

- ALL WORK SHALL BE IN ACCORDANCE WITH THE EROSION CONTROL PLANS, THE PROJECT'S STORM WATER POLLUTION PREVENTION PLAN (SWPP), AND THE RECOMMENDATIONS OF SOILS REPORT.
- EROSION CONTROL MEASURES SHALL BE IN PLACE AT THE END OF EACH WORKING DAY WHENEVER THE DAILY RAINFALL PROBABILITY EXCEEDS 40%.
- EQUIPMENT AND WORKERS FOR EMERGENCY WORK SHALL BE MADE AVAILABLE AT ALL TIMES DURING THE RAINY SEASON. NECESSARY MATERIALS SHALL BE AVAILABLE ON SITE AND STOCKPILED AT CONVENIENT LOCATIONS TO FACILITATE RAPID CONSTRUCTION OF TEMPORARY EROSION CONTROL DEVICES AT ALL TIME.
- CONTROLS SHALL BE SET UP AND MAINTAINED AS CONSTRUCTION PROCEEDS. ADJUSTMENTS TO THE EROSION CONTROL PLANS ARE ALLOWABLE AS REQUIRED AND APPROVED BY CITY.
- ALL EROSION AND SEDIMENT CONTROL MEASURES SHALL IMPLEMENT STRUCTURAL AND NONSTRUCTURAL BEST MANAGEMENT (BMP) IN CONFORMANCE WITH THE GUIDELINES OF THE CALIFORNIA STORM WATER BMP HANDBOOKS.
- AFTER A RAINSTORM, ALL SEDIMENT AND DEBRIS SHALL BE REMOVED FROM STREETS, CHECK BERMS AND DESILTING BASINS. ANY GRADED SLOPE SURFACE PROTECTION MEASURES DAMAGED DURING A RAINSTORM SHALL BE IMMEDIATELY REPAIRED.
- THE PERMITTEE AND CONTRACTOR SHALL BE RESPONSIBLE AND SHALL TAKE NECESSARY PRECAUTIONS TO PREVENT TRESPASS ONTO AREAS WHERE IMPOUNDED WATER CREATED A HAZARDOUS CONDITION.

EROSION CONTROL NOTES

- TC-1 STABILIZED CONSTRUCTION ENTRANCE PER DETAIL SHOWN HEREON.
- SE-5 FIBER ROLL PER DETAIL SHOWN HEREON.
- SE-7 STREET SWEEPING.
- SE-8 GRAVEL BAG BARRIER PER DETAIL SHOWN HEREON.
- SE-10 STORM DRAIN INLET PROTECTION PER DETAIL SHOWN HEREON.
- WE-1 INSTALL TEMPORARY CONSTRUCTION FENCING WITH DUST CONTROL MEASURES.
- WM-3 STOCKPILE MANAGEMENT.
- WM-5 SOLID WASTE MANAGEMENT.
- WM-8 CONCRETE WASTE MANAGEMENT.
- WM-9 SANITARY/SEPTIC WASTE MANAGEMENT.

NOTE: BMP DRAWING NUMBERS IN () REFER TO THE CALIFORNIA STORMWATER QUALITY ASSOCIATION'S BEST MANAGEMENT PRACTICES HANDBOOK, CONSTRUCTION.

EMERGENCY CONTACT

OWNER/DEVELOPER
COVI CONCRETE CONSTRUCTION
7621 REYNOLDS CIRCLE
HUNTINGTON BEACH, CA 92647
CONTACT: PAUL BISSIN
TEL: (714)842-3185

OFF-SITE IMPROVEMENTS

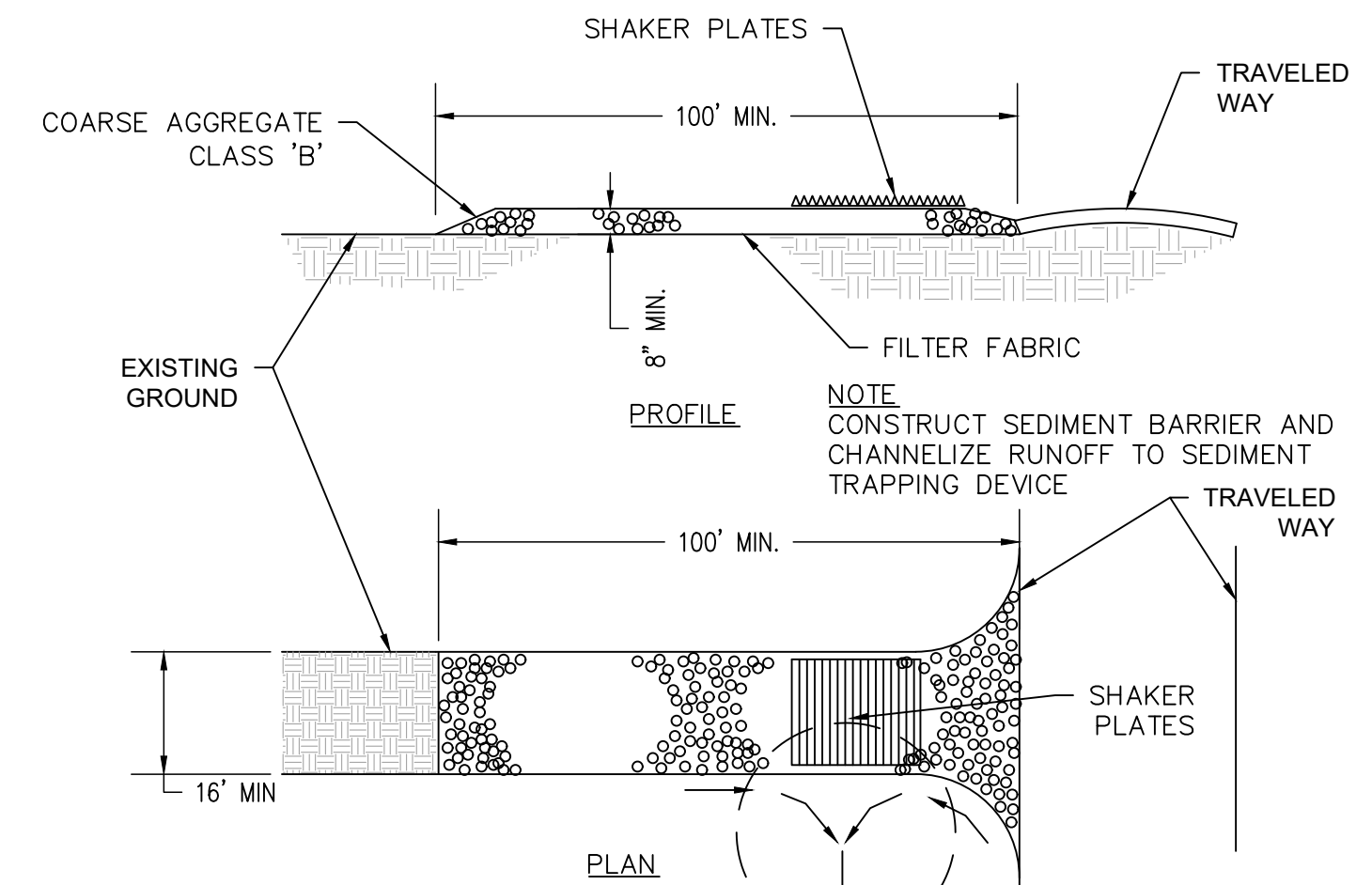
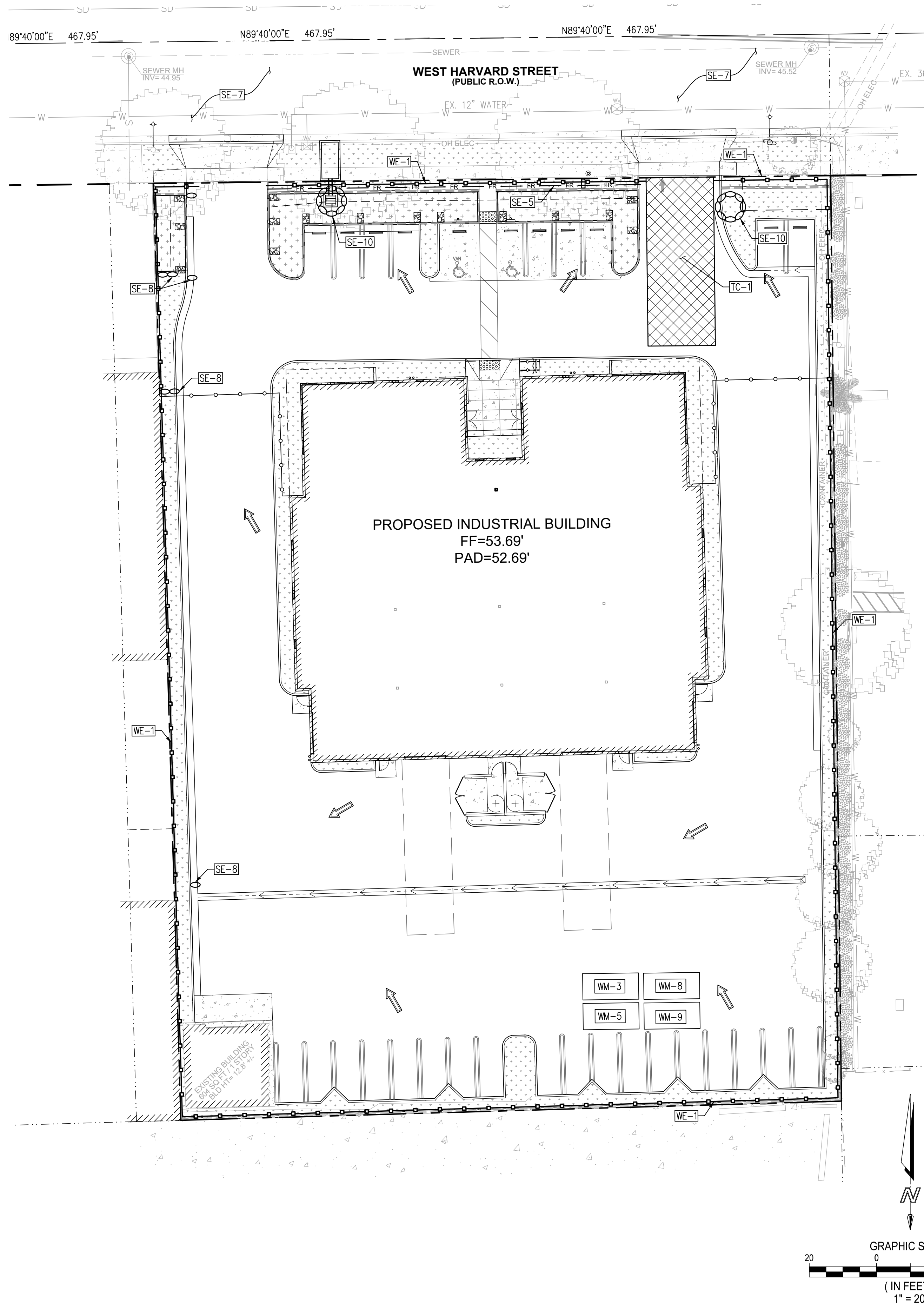
SEE SEPARATE PLANS AND PERMIT FOR OFF-SITE IMPROVEMENTS AND DEMOLITION.

WATER NOTE

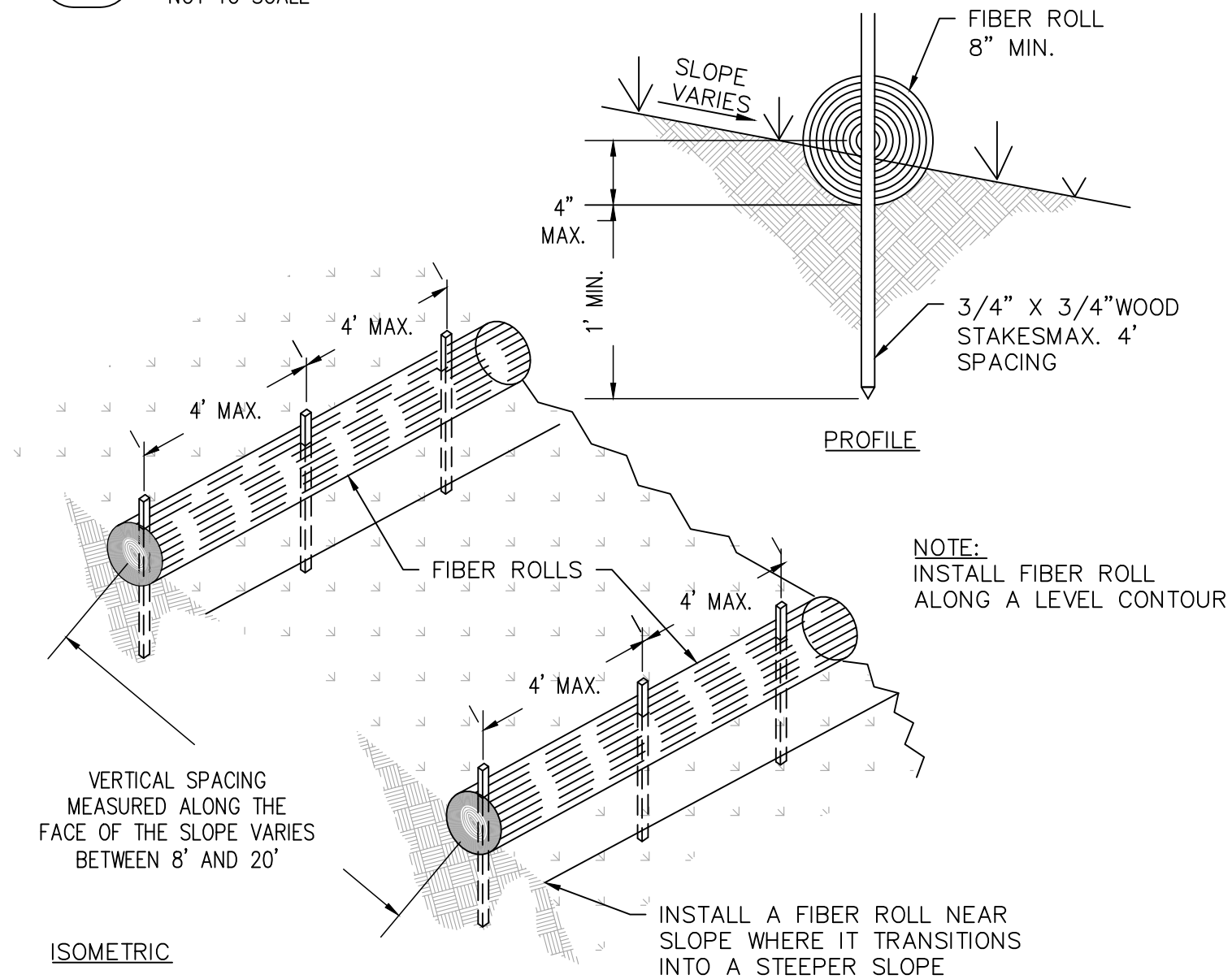
INSTALL DOUBLE CHECK VALVE AND BACK FLOW PREVENTER FOR ALL FIRE SERVICES, DOMESTIC AND LANDSCAPE WATER METER PER THE GRADING AND THE STREET IMPROVEMENT PLANS.

WQMP NOTE

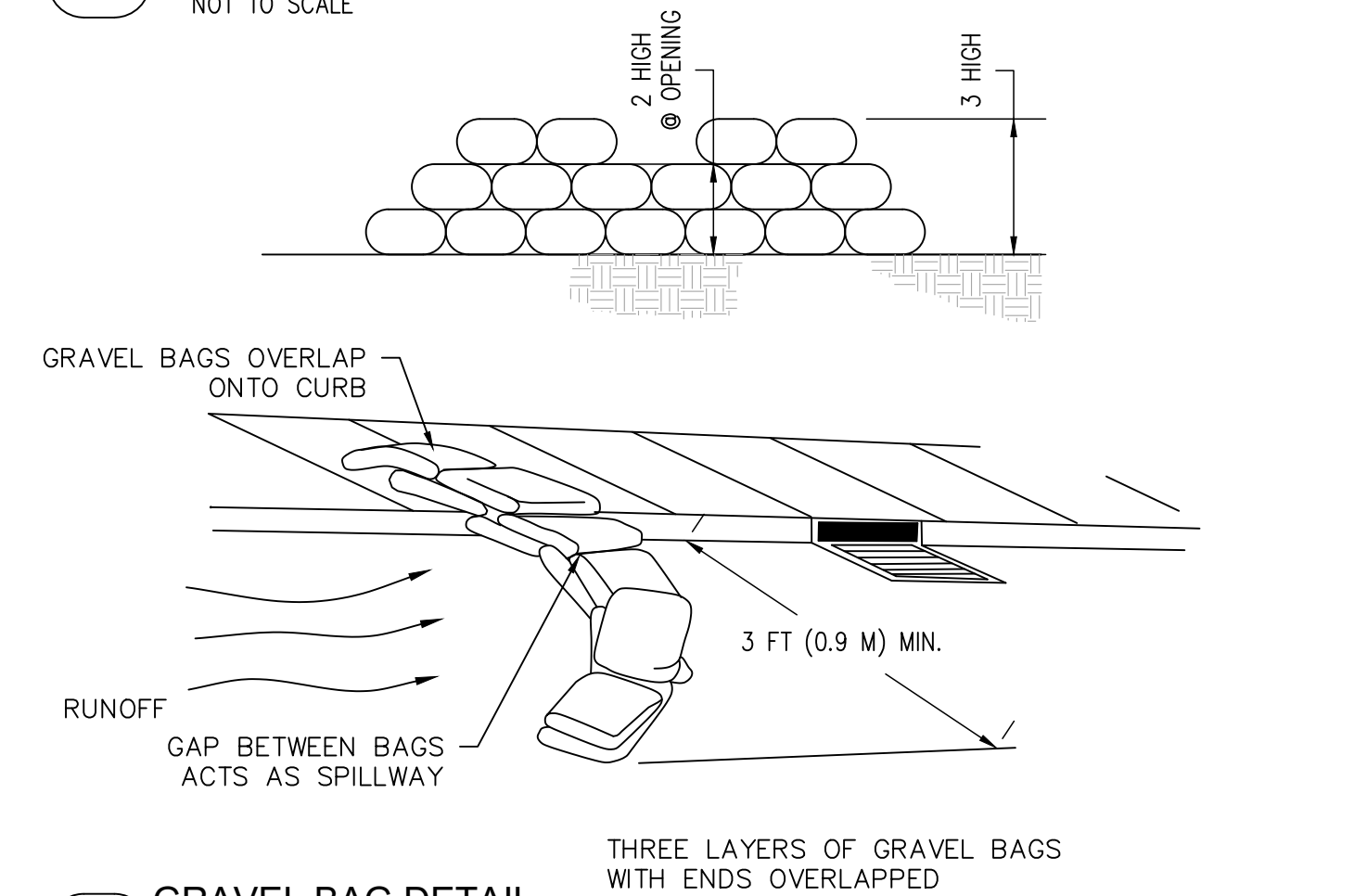
THIS SITE WILL BE DESIGNED AND CONSTRUCTED IN ACCORDANCE WITH THE CALIFORNIA REGIONAL WATER QUALITY CONTROL BOARD SANTA ANA REGION ORDER NO. R8-2009-0030 DISCHARGE REQUIREMENTS (MS4 PERMIT).



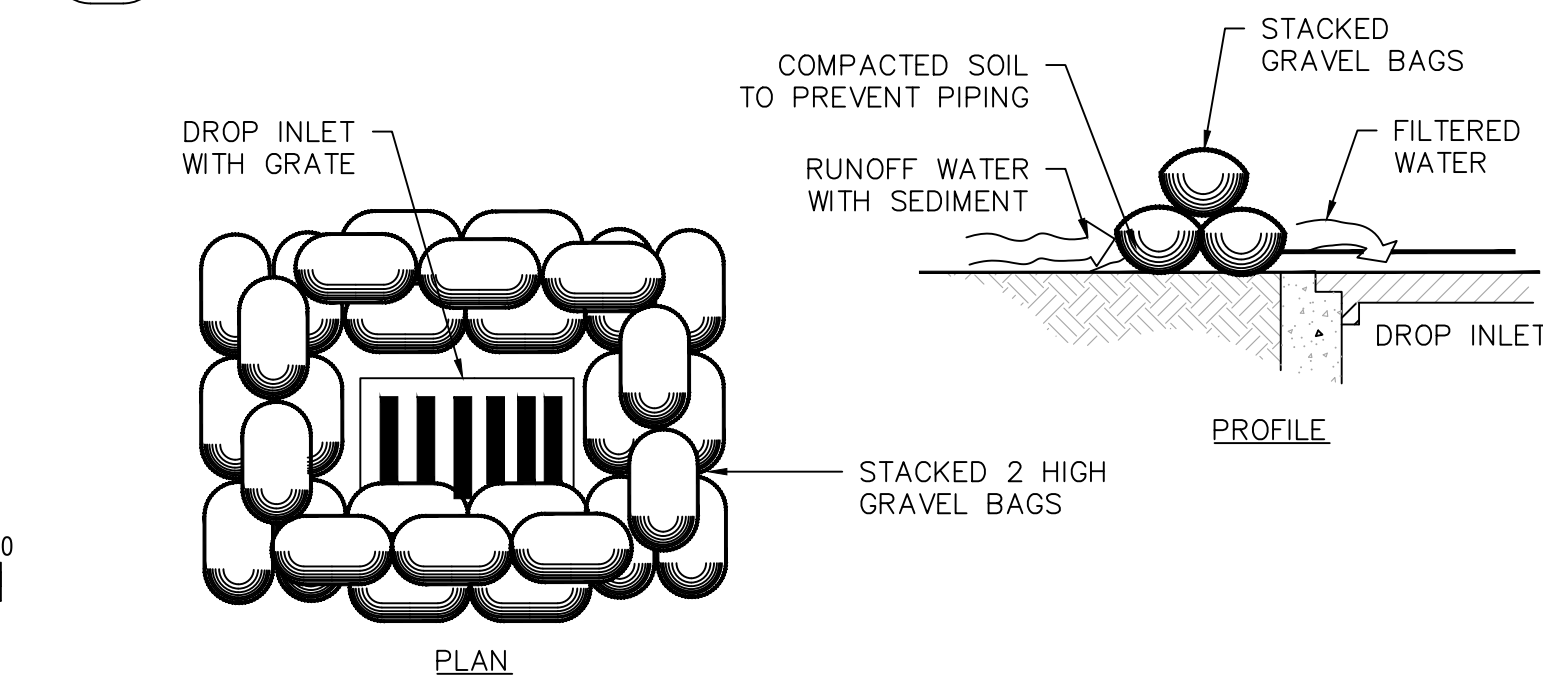
TC-1 STABILIZED CONSTRUCTION ENTRANCE
NOT TO SCALE



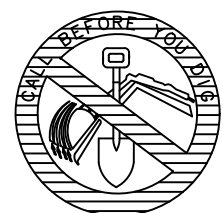
SE-5 FIBER ROLL DETAIL
NOT TO SCALE



SE-6 GRAVEL BAG DETAIL
NOT TO SCALE



SE-10 INLET PROTECTION DETAIL
NOT TO SCALE

Underground Service Alert
of Southern California

CALL: TOLL FREE 1-800-422-4133
TWO WORKING DAYS
BEFORE YOU DIG
811



DATE	BY	REVISIONS

3020 W HARVARD STREET INDUSTRIAL BUILDING

3020 WEST HARVARD STREET

SANTA ANA, CA 92704

EROSION CONTROL PLAN

PROJECT NUMBER: 22-043
PREPARED ON: 4/26/23
REVISED ON: 4/26/23
PREPARED BY: GMH
CHECKED BY: THJ

SHEET
8 OF 13