

Subarea	Area (SQFT)	Area (ACRES)	Type	Sediment Volume (FT ³)	Basin Floor L (FT) x W (FT)	
1	51,690	1.19	Sediment Trap**	1,057	18	18
2	120,055	2.76	Sediment Trap**	2,456	38	38
3	162,812	3.74	Sediment Trap**	3,330	45	45
4	18,668	0.43	Sediment Trap**	382	23	20
5	13,779	0.32	Sediment Trap**	282	23	20
Total	367,004	8.43		6,843.2		

BMP LEGEND		
SYMBOL	CODE	DESCRIPTION
	TC-1/TC-2	STABILIZED CONSTRUCTION ROAD ENTRANCE/EXIT
	WM-1	WIND SCREEN/PERIMETER FENCE
	EC-9	DRAINAGE SWALES
	EC-3	HYDRAULIC MULCH
	SE-3	TEMPORARY SEDIMENT TRAP
	SE-4	CHECK DAMS
	SE-6	GRAVEL BAG BERM
	SE-7	STREET SWEEPING & VACUUMING
	SE-10	STORM DRAIN INLET PROTECTION
	NS-2	DEWATERING OPERATIONS - SEE NOTES HEREIN
		ONSITE SAMPLING LOCATION (SEE SAMPLING NOTES HEREIN)
		OFFSITE SAMPLING LOCATION

BMP DETAILS CAN BE OBTAINED IN THE SWPPP PREPARED FOR THIS PROJECT BY FUSCOE ENGINEERING OR AT:
<https://ocerws.ocpublicworks.com/service-areas/oc-environmental-resources/oc-watersheds/unincorporated-countywide-compliance/best>

SAMPLING NOTES FOR RISK LEVEL 2

1. RISK LEVEL 2 - WATER QUALITY SAMPLING AND ANALYSIS
- A. RISK LEVEL 2 DISCHARGERS SHALL COLLECT STORM WATER GRAB SAMPLES FROM SAMPLING LOCATIONS, AS DEFINED BELOW. THE STORM WATER GRAB SAMPLE(S) OBTAINED SHALL BE REPRESENTATIVE OF THE FLOW AND CHARACTERISTICS OF THE DISCHARGE.
- B. AT MINIMUM, RISK LEVEL 2 DISCHARGERS SHALL COLLECT 3 SAMPLES PER DAY OF THE QUALIFYING EVENT.
- C. RISK LEVEL 2 DISCHARGERS SHALL ENSURE THAT THE GRAB SAMPLES COLLECTED OF STORED OR CONTAINED STORM WATER ARE FROM DISCHARGES SUBSEQUENT TO A QUALIFYING RAIN EVENT (PRODUCING PRECIPITATION OF 1/2 INCH OR MORE AT THE TIME OF DISCHARGE).
- STORM WATER EFFLUENT MONITORING REQUIREMENTS
- D. RISK LEVEL 2 DISCHARGERS SHALL ANALYZE THEIR EFFLUENT SAMPLES FOR:
- i. PH AND TURBIDITY
- ii. ANY ADDITIONAL PARAMETERS FOR WHICH MONITORING IS REQUIRED BY THE REGIONAL WATER BOARD.
2. RISK LEVEL 2 - STORM WATER DISCHARGE WATER QUALITY SAMPLING LOCATIONS
- EFFLUENT SAMPLING LOCATIONS
- A. RISK LEVEL 2 DISCHARGERS SHALL PERFORM SAMPLING AND ANALYSIS OF STORM WATER DISCHARGES TO CHARACTERIZE DISCHARGES ASSOCIATED WITH CONSTRUCTION ACTIVITY FROM THE ENTIRE PROJECT DISTURBED AREA.
- B. RISK LEVEL 2 DISCHARGERS SHALL COLLECT EFFLUENT SAMPLES AT ALL DISCHARGE POINTS WHERE STORM WATER IS DISCHARGED OFF-SITE. C. RISK LEVEL 2 DISCHARGERS SHALL ENSURE THAT STORM WATER DISCHARGE COLLECTED AND OBSERVED REPRESENT THE EFFLUENT IN EACH DRAINAGE AREA BASED ON VISUAL OBSERVATION OF THE WATER AND UPSTREAM CONDITIONS.
- C. RISK LEVEL 2 DISCHARGERS SHALL MONITOR AND REPORT SITE RUN-ON FROM SURROUNDING AREAS IF THERE IS REASON TO BELIEVE RUN-ON MAY CONTRIBUTE TO AN EXCEEDANCE OF NALS OR NELS.
- D. RISK LEVEL 2 DISCHARGERS WHO DEPLOY AN ATS ON THEIR SITE, OR A PORTION ON THEIR SITE, SHALL COLLECT ATS EFFLUENT SAMPLES AND MEASUREMENTS FROM THE DISCHARGE PIPE OR ANOTHER LOCATION REPRESENTATIVE OF THE NATURE OF THE DISCHARGE.
- E. RISK LEVEL 2 DISCHARGERS SHALL SELECT ANALYTICAL TEST METHODS AS STATED IN THE CALIFORNIA GENERAL CONSTRUCTION PERMIT.
- F. ALL STORM WATER SAMPLE COLLECTION PRESERVATION AND HANDLING SHALL BE CONDUCTED IN ACCORDANCE WITH "STORM WATER SAMPLE COLLECTION AND HANDLING INSTRUCTIONS" BELOW.
3. RISK LEVEL 2 - VISUAL OBSERVATION AND SAMPLE COLLECTION EXEMPTIONS
- A. RISK LEVEL 2 DISCHARGERS SHALL BE PREPARED TO COLLECT SAMPLES AND CONDUCT VISUAL OBSERVATION (INSPECTIONS) UNTIL THE MINIMUM REQUIREMENTS AS STATED ABOVE ARE COMPLETED. RISK LEVEL 2 DISCHARGERS ARE NOT REQUIRED TO PHYSICALLY COLLECT SAMPLES OR CONDUCT VISUAL OBSERVATION (INSPECTIONS) UNDER THE FOLLOWING CONDITIONS:
- i. DURING DANGEROUS WEATHER CONDITIONS SUCH AS FLOODING AND ELECTRICAL STORMS.
- ii. OUTSIDE OF SCHEDULED SITE BUSINESS HOURS.
- B. IF NO REQUIRED SAMPLES OR VISUAL OBSERVATION (INSPECTIONS) ARE COLLECTED DUE TO THESE EXCEPTIONS, RISK LEVEL 2 DISCHARGERS SHALL INCLUDE AN EXPLANATION IN THEIR SWPPP AND IN THE ANNUAL REPORT DOCUMENTING WHY THE SAMPLING OR VISUAL OBSERVATION (INSPECTIONS) WERE NOT CONDUCTED.

LEGEND	
	LIMIT OF WORK
	PROPERTY LINE/RIGHT OF WAY
	CENTERLINE
	EX CURB
	EX STORM DRAIN
	DIRECTION OF SURFACE FLOW
	TEMPORARY DEWATERING DRAIN (SEE DEWATERING NOTES HEREIN)

NOTES

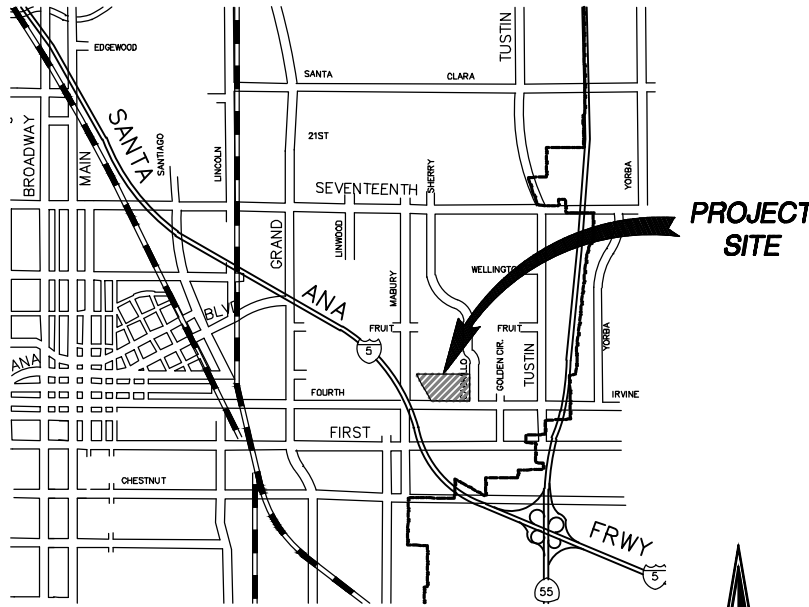
1. IN ADDITION TO THE BMPS SHOWN ON THIS PLAN, THE CONTRACTOR SHALL PRACTICE "GOOD HOUSEKEEPING" POLICIES PURSUANT TO THE FOLLOWING DETAILS:
- EC-1 SCHEDULING
- EC-2 PRESERVATION OF EXISTING VEGETATION
- WE-1 WIND EROSION CONTROL
- NS-6 ILLICIT CONNECTION/DISCHARGE
- NS-7 POTABLE WATER/IRRIGATION
- NS-8 VEHICLE AND EQUIPMENT CLEANING
- NS-9 VEHICLE AND EQUIPMENT FUELING
- NS-10 VEHICLE AND EQUIPMENT MAINTENANCE
- NS-12 CONCRETE CURING
- NS-13 CONCRETE FINISHING
- WM-1 MATERIAL DELIVERY AND STORAGE
- WM-2 MATERIAL USE
- WM-3 STOCKPILE MANAGEMENT
- WM-4 SPILL PREVENTION AND CONTROL
- WM-5 SOLID WASTE MANAGEMENT
- WM-6 HAZARDOUS WASTE MANAGEMENT
- WM-7 CONTAMINATED SOIL MANAGEMENT
- WM-8 CONCRETE WASTE MANAGEMENT
- WM-9 SANITARY/SEPTIC WASTE MANAGEMENT
- WM-10 LIQUID WASTE MANAGEMENT
2. FOR PROPER INSTALLATION OF THESE DEVICES CONSULT YOUR STORM WATER POLLUTION PREVENTION PLAN FOR DETAILS.
3. CONTRACTOR SHALL NOTE ON THIS PLAN THE LOCATIONS, IF ANY, WHERE MATERIALS ARE DIRECTLY EXPOSED TO STORM WATER.
4. CONTRACTOR SHALL INCLUDE THE REMOVAL AND ABANDONMENT OF THE EROSION CONTROL FACILITIES.
5. LOCATION OF BUILDING AND ACTIVITY AREAS (E.G. FUELING ISLANDS, WASTE CONTAINER AREA, WASH RACKS, ETC.) IS TO BE DETERMINED BY THE CONTRACTOR PRIOR TO START OF CONSTRUCTION AND ADDED TO THIS PLAN.
6. IT IS THE CONTRACTOR/SUPERVISOR/QUALIFIED SWPPP PRACTITIONER (QSP)'S RESPONSIBILITY TO KEEP THIS SWPPP MAP CURRENT. BMPS SHOULD BE ADDED, MOVED OR REMOVED BASED ON SITE CONDITIONS. HAND MARKED ALTERATIONS WITH INITIALS AND DATE ARE AN ACCEPTABLE FORM OF ALTERATION. THE CONTRACTOR MAY BE ASKED AT ANY TIME TO PRODUCE THIS SWPPP MAP. FAILURE TO KEEP THIS MAP CURRENT COULD RESULT IN A NOTICE OF VIOLATION AND/OR FINE.
7. THIS SWPPP EXHIBIT/WALL MAP IS PROVIDED AS AN EXHIBIT TO REFLECT CURRENT FIELD CONDITIONS. REFER TO FULL SWPPP DOCUMENT AND CONSTRUCTION GENERAL PERMIT FOR DETAILED INFORMATION REGARDING BMP IMPLEMENTATION AND MAINTAINING COMPLIANCE UNDER CALIFORNIA CONSTRUCTION GENERAL PERMIT.

DEWATERING OPERATIONS BMP (NS-2)

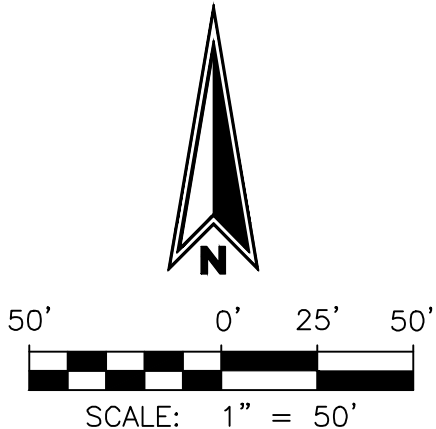
DEWATERING WILL OCCUR TO REMOVE EXCESS WATER WITHIN ANY UTILITY TRENCH EXCAVATION SITES THAT HAS BEEN PONDED FOR GREATER THAN 72 HOURS. DISCHARGES MUST ONLY CONSIST OF CLEAN STORM WATER. ANY PONDED WATER (GREATER THAN 72 HOURS) MAY BE PUMPED FROM THE TRENCH/EXCAVATION AREA TO A BAFFLE TANK SYSTEM, WEIR TANK, OR DEWATERING FILTER BAGS TO REMOVE TRASH, SETTLEABLE SOLIDS, AS WELL AS SOME METALS, OILS AND GREASE, IF NECESSARY, PRIOR TO DISCHARGING OFF-SITE. PERIODIC CLEANING IS REQUIRED BASED ON INSPECTIONS OR REDUCED FLOW, AND OIL & GREASE REMOVAL MUST BE DONE BY A LICENSED WASTE DISPOSAL COMPANY.

SOIL STABILIZATION BMPS

ANY INACTIVE PADS, EXCAVATED AREAS OR OTHER DISTURBED AREAS THAT WILL REMAIN INACTIVE FOR LONGER THAN 10 DAYS SHALL BE STABILIZED WITH HYDROSEED, HYDRAULIC MULCH, PLASTIC SHEETING (I.E. VISQUEEN ANCHORED WITH GRAVEL/SANDBAGS) OR EQUIVALENT EROSION CONTROL BMP. TEMPORARY SOIL STABILIZATION MEASURES SHALL BE MAINTAINED UNTIL PERMANENT STABILIZATION CAN BE ESTABLISHED.



VICINITY MAP
NOT TO SCALE





BMP LEGEND		
SYMBOL	CODE	DESCRIPTION
	TC-1/TC-2	STABILIZED CONSTRUCTION ROAD ENTRANCE/EXIT
	WM-1	WIND SCREEN/PERIMETER FENCE
	EC-3	HYDRAULIC MULCH
	SE-4	CHECK DAMS
	SE-6	GRAVEL BAG BERM
	SE-7	STREET SWEEPING & VACUUMING
	SE-10	STORM DRAIN INLET PROTECTION
	NS-2	DEWATERING OPERATIONS - SEE NOTES HEREIN
		ONSITE SAMPLING LOCATION (SEE SAMPLING NOTES HEREIN)
		OFFSITE SAMPLING LOCATION

BMP DETAILS CAN BE OBTAINED IN THE SWPPP PREPARED FOR THIS PROJECT BY FUSCOE ENGINEERING OR AT:
<https://ocerws.ocpublicworks.com/service-areas/oc-environmental-resources/oc-watersheds/unincorporated-countywide-compliance/best>

LEGEND	
	LIMIT OF WORK
	PROPERTY LINE/RIGHT OF WAY
	CENTERLINE
	EX CURB
	PROPOSED CURB
	PROPOSED STORM DRAIN
	EX STORM DRAIN
	PROPOSED SANITARY SEWER
	EX SANITARY SEWER
	PROPOSED WATER LINE
	EX WATER LINE
	DIRECTION OF PIPED FLOW
	DIRECTION OF SURFACE FLOW
	TEMPORARY DEWATERING DRAIN (SEE DEWATERING NOTES HEREIN)
	PROPOSED DETENTION SYSTEM
	PROPOSED DRYWELL SYSTEM
	PROPOSED HYDRODYNAMIC SEPARATOR
	BULKHEAD INLET TO PROPOSED DRYWELL SYSTEM
	PAVED SURFACE

SAMPLING NOTES FOR RISK LEVEL 2

1. RISK LEVEL 2 - WATER QUALITY SAMPLING AND ANALYSIS
- A. RISK LEVEL 2 DISCHARGERS SHALL COLLECT STORM WATER GRAB SAMPLES FROM SAMPLING LOCATIONS, AS DEFINED BELOW. THE STORM WATER GRAB SAMPLE(S) OBTAINED SHALL BE REPRESENTATIVE OF THE FLOW AND CHARACTERISTICS OF THE DISCHARGE.
- B. AT MINIMUM, RISK LEVEL 2 DISCHARGERS SHALL COLLECT 3 SAMPLES PER DAY OF THE QUALIFYING EVENT.
- C. RISK LEVEL 2 DISCHARGERS SHALL ENSURE THAT THE GRAB SAMPLES COLLECTED OF STORED OR CONTAINED STORM WATER ARE FROM DISCHARGES SUBSEQUENT TO A QUALIFYING RAIN EVENT (PRODUCING PRECIPITATION OF 1/2 INCH OR MORE AT THE TIME OF DISCHARGE).
- STORM WATER EFFLUENT MONITORING REQUIREMENTS
- D. RISK LEVEL 2 DISCHARGERS SHALL ANALYZE THEIR EFFLUENT SAMPLES FOR:
- i. PH AND TURBIDITY.
- ii. ANY ADDITIONAL PARAMETERS FOR WHICH MONITORING IS REQUIRED BY THE REGIONAL WATER BOARD.
2. RISK LEVEL 2 - STORM WATER DISCHARGE WATER QUALITY SAMPLING LOCATIONS
- EFFLUENT SAMPLING LOCATIONS
- A. RISK LEVEL 2 DISCHARGERS SHALL PERFORM SAMPLING AND ANALYSIS OF STORM WATER DISCHARGES TO CHARACTERIZE DISCHARGES ASSOCIATED WITH CONSTRUCTION ACTIVITY FROM THE ENTIRE PROJECT DISTURBED AREA.
- B. RISK LEVEL 2 DISCHARGERS SHALL COLLECT EFFLUENT SAMPLES AT ALL DISCHARGE POINTS WHERE STORM WATER IS DISCHARGED OFF-SITE. C. RISK LEVEL 2 DISCHARGERS SHALL ENSURE THAT STORM WATER DISCHARGE COLLECTED AND OBSERVED REPRESENT THE EFFLUENT IN EACH DRAINAGE AREA BASED ON VISUAL OBSERVATION OF THE WATER AND UPSTREAM CONDITIONS.
- C. RISK LEVEL 2 DISCHARGERS SHALL MONITOR AND REPORT SITE RUN-ON FROM SURROUNDING AREAS IF THERE IS REASON TO BELIEVE RUN-ON MAY CONTRIBUTE TO AN EXCEEDANCE OF NALS OR NELS.
- D. RISK LEVEL 2 DISCHARGERS WHO DEPLOY AN ATS ON THEIR SITE, OR A PORTION ON THEIR SITE, SHALL COLLECT ATS EFFLUENT SAMPLES AND MEASUREMENTS FROM THE DISCHARGE PIPE OR ANOTHER LOCATION REPRESENTATIVE OF THE NATURE OF THE DISCHARGE.
- E. RISK LEVEL 2 DISCHARGERS SHALL SELECT ANALYTICAL TEST METHODS AS STATED IN THE CALIFORNIA GENERAL CONSTRUCTION PERMIT.
- F. ALL STORM WATER SAMPLE COLLECTION PRESERVATION AND HANDLING SHALL BE CONDUCTED IN ACCORDANCE WITH "STORM WATER SAMPLE COLLECTION AND HANDLING INSTRUCTIONS" BELOW.
3. RISK LEVEL 2 - VISUAL OBSERVATION AND SAMPLE COLLECTION EXEMPTIONS
- A. RISK LEVEL 2 DISCHARGERS SHALL BE PREPARED TO COLLECT SAMPLES AND CONDUCT VISUAL OBSERVATION (INSPECTIONS) UNTIL THE MINIMUM REQUIREMENTS AS STATED ABOVE ARE COMPLETED. RISK LEVEL 2 DISCHARGERS ARE NOT REQUIRED TO PHYSICALLY COLLECT SAMPLES OR CONDUCT VISUAL OBSERVATION (INSPECTIONS) UNDER THE FOLLOWING CONDITIONS:
- i. DURING DANGEROUS WEATHER CONDITIONS SUCH AS FLOODING AND ELECTRICAL STORMS.
- ii. OUTSIDE OF SCHEDULED SITE BUSINESS HOURS.
- B. IF NO REQUIRED SAMPLES OR VISUAL OBSERVATION (INSPECTIONS) ARE COLLECTED DUE TO THESE EXCEPTIONS, RISK LEVEL 2 DISCHARGERS SHALL INCLUDE AN EXPLANATION IN THEIR SWPPP AND IN THE ANNUAL REPORT DOCUMENTING WHY THE SAMPLING OR VISUAL OBSERVATION (INSPECTIONS) WERE NOT CONDUCTED.

NOTES

1. IN ADDITION TO THE BMPS SHOWN ON THIS PLAN, THE CONTRACTOR SHALL PRACTICE "GOOD HOUSEKEEPING" POLICIES PURSUANT TO THE FOLLOWING DETAILS:
- EC-1 SCHEDULING
- EC-2 PRESERVATION OF EXISTING VEGETATION
- WE-1 WIND EROSION CONTROL
- NS-6 ILLICIT CONNECTION/DISCHARGE
- NS-7 POTABLE WATER/IRRIGATION
- NS-8 VEHICLE AND EQUIPMENT CLEANING
- NS-9 VEHICLE AND EQUIPMENT FUELING
- NS-10 VEHICLE AND EQUIPMENT MAINTENANCE
- NS-12 CONCRETE CURING
- NS-13 CONCRETE FINISHING
- WM-1 MATERIAL DELIVERY AND STORAGE
- WM-2 MATERIAL USE
- WM-3 STOCKPILE MANAGEMENT
- WM-4 SPILL PREVENTION AND CONTROL
- WM-5 SOLID WASTE MANAGEMENT
- WM-6 HAZARDOUS WASTE MANAGEMENT
- WM-7 CONTAMINATED SOIL MANAGEMENT
- WM-8 CONCRETE WASTE MANAGEMENT
- WM-9 SANITARY/SEPTIC WASTE MANAGEMENT
- WM-10 LIQUID WASTE MANAGEMENT
2. FOR PROPER INSTALLATION OF THESE DEVICES CONSULT YOUR STORM WATER POLLUTION PREVENTION PLAN FOR DETAILS.
3. CONTRACTOR SHALL NOTE ON THIS PLAN THE LOCATIONS, IF ANY, WHERE MATERIALS ARE DIRECTLY EXPOSED TO STORM WATER.
4. CONTRACTOR SHALL INCLUDE THE REMOVAL AND ABANDONMENT OF THE EROSION CONTROL FACILITIES.
5. LOCATION OF BUILDING AND ACTIVITY AREAS (E.G. FUELING ISLANDS, WASTE CONTAINER AREA, WASH RACKS, ETC.) IS TO BE DETERMINED BY THE CONTRACTOR PRIOR TO START OF CONSTRUCTION AND ADDED TO THIS PLAN.
6. IT IS THE CONTRACTOR/SUPERVISOR/QUALIFIED SWPPP PRACTITIONER (OSP'S) RESPONSIBILITY TO KEEP THIS SWPPP MAP CURRENT. "BMPS SHOULD BE ADDED, MOVED OR REMOVED BASED ON SITE CONDITIONS. HAND MARKED ALTERATIONS WITH INITIALS AND DATE ARE AN ACCEPTABLE FORM OF ALTERATION. THE CONTRACTOR MAY BE ASKED AT ANY TIME TO PRODUCE THIS SWPPP MAP. FAILURE TO KEEP THIS MAP CURRENT COULD RESULT IN A NOTICE OF VIOLATION AND/OR FINE.
7. THIS SWPPP EXHIBIT/WALL MAP IS PROVIDED AS AN EXHIBIT TO REFLECT CURRENT FIELD CONDITIONS. REFER TO FULL SWPPP DOCUMENT AND CONSTRUCTION GENERAL PERMIT FOR DETAILED INFORMATION REGARDING BMP IMPLEMENTATION AND MAINTAINING COMPLIANCE UNDER CALIFORNIA CONSTRUCTION GENERAL PERMIT.

DEWATERING OPERATIONS BMP (NS-2)

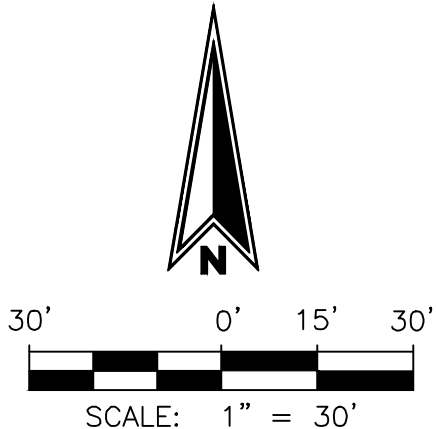
DEWATERING WILL OCCUR TO REMOVE EXCESS WATER WITHIN ANY UTILITY TRENCH EXCAVATION SITES THAT HAS BEEN PONDED FOR GREATER THAN 72 HOURS. DISCHARGES MUST ONLY CONSIST OF CLEAN STORM WATER. ANY PONDED WATER (GREATER THAN 72 HOURS) MAY BE PUMPED FROM THE TRENCH/EXCAVATION AREA TO A BAFFLE TANK SYSTEM, WEIR TANK, OR DEWATERING FILTER BAGS TO REMOVE TRASH, SETTLEABLE SOLIDS, AS WELL AS SOME METALS, OILS AND GREASE, IF NECESSARY, PRIOR TO DISCHARGING OFF-SITE. PERIODIC CLEANING IS REQUIRED BASED ON INSPECTIONS OR REDUCED FLOW, AND OIL & GREASE REMOVAL MUST BE DONE BY A LICENSED WASTE DISPOSAL COMPANY.

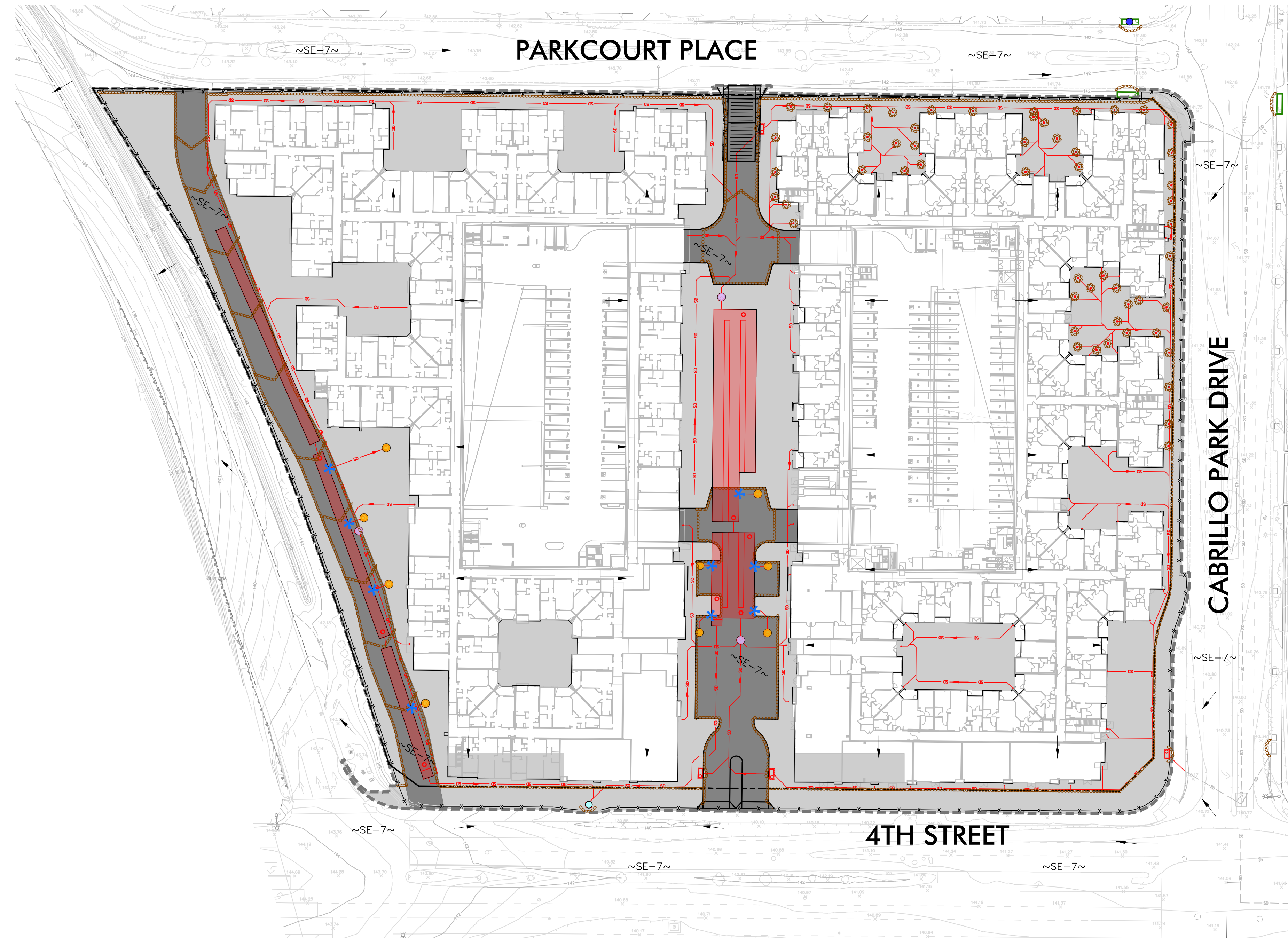
SOIL STABILIZATION BMPS

ANY INACTIVE PADS, EXCAVATED AREAS OR OTHER DISTURBED AREAS THAT WILL REMAIN INACTIVE FOR LONGER THAN 10 DAYS SHALL BE STABILIZED WITH HYDROSEED, HYDRAULIC MULCH, PLASTIC SHEETING (I.E. VISQUEEN ANCHORED WITH GRAVEL/SANDBAGS) OR EQUIVALENT EROSION CONTROL BMP. TEMPORARY SOIL STABILIZATION MEASURES SHALL BE MAINTAINED UNTIL PERMANENT STABILIZATION CAN BE ESTABLISHED.



VICINITY MAP
NOT TO SCALE





BMP LEGEND		
SYMBOL	CODE	DESCRIPTION
	TC-1/TC-2	STABILIZED CONSTRUCTION ROAD ENTRANCE/EXIT
	WM-1	WIND SCREEN/PERIMETER FENCE
	EC-3	HYDRAULIC MULCH
	SE-4	CHECK DAMS
	SE-6	GRAVEL BAG BERM
	SE-7	STREET SWEEPING & VACUUMING
	SE-10	STORM DRAIN INLET PROTECTION
		ONSITE SAMPLING LOCATION (SEE SAMPLING NOTES HEREIN)
		OFFSITE SAMPLING LOCATION

BMP DETAILS CAN BE OBTAINED IN THE SWPPP PREPARED FOR THIS PROJECT BY FUSCOE ENGINEERING OR AT:
<https://ocerws.ocpublicworks.com/service-areas/oc-environmental-resources/oc-watersheds/unincorporated-countywide-compliance/best>

LEGEND	
	LIMIT OF WORK
	PROPERTY LINE/RIGHT OF WAY
	CENTERLINE
	EX CURB
	PROPOSED CURB
	PROPOSED STORM DRAIN
	EX STORM DRAIN
	EX SANITARY SEWER
	EX WATER LINE
	DIRECTION OF PIPED FLOW
	DIRECTION OF SURFACE FLOW
	TEMPORARY DEWATERING DRAIN (SEE DEWATERING NOTES HEREIN)
	PROPOSED DETENTION SYSTEM
	PROPOSED DRYWELL SYSTEM
	PROPOSED HYDRODYNAMIC SEPARATOR
	BULKHEAD INLET TO PROPOSED DRYWELL SYSTEM
	PAVED SURFACE

SAMPLING NOTES FOR RISK LEVEL 2

1. RISK LEVEL 2 – WATER QUALITY SAMPLING AND ANALYSIS
- A. RISK LEVEL 2 DISCHARGERS SHALL COLLECT STORM WATER GRAB SAMPLES FROM SAMPLING LOCATIONS, AS DEFINED BELOW. THE STORM WATER GRAB SAMPLE(S) OBTAINED SHALL BE REPRESENTATIVE OF THE FLOW AND CHARACTERISTICS OF THE DISCHARGE.
- B. AT MINIMUM, RISK LEVEL 2 DISCHARGERS SHALL COLLECT 3 SAMPLES PER DAY OF THE QUALIFYING EVENT.
- C. RISK LEVEL 2 DISCHARGERS SHALL ENSURE THAT THE GRAB SAMPLES COLLECTED OF STORED OR CONTAINED STORM WATER ARE FROM DISCHARGES SUBSEQUENT TO A QUALIFYING RAIN EVENT (PRODUCING PRECIPITATION OF 1/2 INCH OR MORE AT THE TIME OF DISCHARGE).
- STORM WATER EFFLUENT MONITORING REQUIREMENTS
- D. RISK LEVEL 2 DISCHARGERS SHALL ANALYZE THEIR EFFLUENT SAMPLES FOR:
- i. PH AND TURBIDITY
- ii. ANY ADDITIONAL PARAMETERS FOR WHICH MONITORING IS REQUIRED BY THE REGIONAL WATER BOARD.
2. RISK LEVEL 2 – STORM WATER DISCHARGE WATER QUALITY SAMPLING LOCATIONS
- EFFLUENT SAMPLING LOCATIONS
- A. RISK LEVEL 2 DISCHARGERS SHALL PERFORM SAMPLING AND ANALYSIS OF STORM WATER DISCHARGES TO CHARACTERIZE DISCHARGES ASSOCIATED WITH CONSTRUCTION ACTIVITY FROM THE ENTIRE PROJECT DISTURBED AREA.
- B. RISK LEVEL 2 DISCHARGERS SHALL COLLECT EFFLUENT SAMPLES AT ALL DISCHARGE POINTS WHERE STORM WATER IS DISCHARGED OFF-SITE. C. RISK LEVEL 2 DISCHARGERS SHALL ENSURE THAT STORM WATER DISCHARGE COLLECTED AND OBSERVED REPRESENT THE EFFLUENT IN EACH DRAINAGE AREA BASED ON VISUAL OBSERVATION OF THE WATER AND UPSTREAM CONDITIONS.
- C. RISK LEVEL 2 DISCHARGERS SHALL MONITOR AND REPORT SITE RUN-ON FROM SURROUNDING AREAS IF THERE IS REASON TO BELIEVE RUN-ON MAY CONTRIBUTE TO AN EXCEEDANCE OF NALS OR NELS.
- D. RISK LEVEL 2 DISCHARGERS WHO DEPLOY AN ATS ON THEIR SITE, OR A PORTION ON THEIR SITE, SHALL COLLECT ATS EFFLUENT SAMPLES AND MEASUREMENTS FROM THE DISCHARGE PIPE OR ANOTHER LOCATION REPRESENTATIVE OF THE NATURE OF THE DISCHARGE.
- E. RISK LEVEL 2 DISCHARGERS SHALL SELECT ANALYTICAL TEST METHODS AS STATED IN THE CALIFORNIA GENERAL CONSTRUCTION PERMIT.
- F. ALL STORM WATER SAMPLE COLLECTION PRESERVATION AND HANDLING SHALL BE CONDUCTED IN ACCORDANCE WITH "STORM WATER SAMPLE COLLECTION AND HANDLING INSTRUCTIONS" BELOW.
3. RISK LEVEL 2 – VISUAL OBSERVATION AND SAMPLE COLLECTION EXEMPTIONS
- A. RISK LEVEL 2 DISCHARGERS SHALL BE PREPARED TO COLLECT SAMPLES AND CONDUCT VISUAL OBSERVATION (INSPECTIONS) UNTIL THE MINIMUM REQUIREMENTS AS STATED ABOVE ARE COMPLETED. RISK LEVEL 2 DISCHARGERS ARE NOT REQUIRED TO PHYSICALLY COLLECT SAMPLES OR CONDUCT VISUAL OBSERVATION (INSPECTIONS) UNDER THE FOLLOWING CONDITIONS:
- i. DURING DANGEROUS WEATHER CONDITIONS SUCH AS FLOODING AND ELECTRICAL STORMS.
- ii. OUTSIDE OF SCHEDULED SITE BUSINESS HOURS.
- B. IF NO REQUIRED SAMPLES OR VISUAL OBSERVATION (INSPECTIONS) ARE COLLECTED DUE TO THESE EXCEPTIONS, RISK LEVEL 2 DISCHARGERS SHALL INCLUDE AN EXPLANATION IN THEIR SWPPP AND IN THE ANNUAL REPORT DOCUMENTING WHY THE SAMPLING OR VISUAL OBSERVATION (INSPECTIONS) WERE NOT CONDUCTED.

NOTES

1. IN ADDITION TO THE BMPS SHOWN ON THIS PLAN, THE CONTRACTOR SHALL PRACTICE "GOOD HOUSEKEEPING" POLICIES PURSUANT TO THE FOLLOWING DETAILS:
- EC-1 SCHEDULING
- EC-2 PRESERVATION OF EXISTING VEGETATION
- WE-1 WIND EROSION CONTROL
- NS-6 ILLICIT CONNECTION/DISCHARGE
- NS-7 POTABLE WATER/IRRIGATION
- NS-8 VEHICLE AND EQUIPMENT CLEANING
- NS-9 VEHICLE AND EQUIPMENT FUELING
- NS-10 VEHICLE AND EQUIPMENT MAINTENANCE
- NS-12 CONCRETE CURING
- NS-13 CONCRETE FINISHING
- WM-1 MATERIAL DELIVERY AND STORAGE
- WM-2 MATERIAL USE
- WM-3 STOCKPILE MANAGEMENT
- WM-4 SPILL PREVENTION AND CONTROL
- WM-5 SOLID WASTE MANAGEMENT
- WM-6 HAZARDOUS WASTE MANAGEMENT
- WM-7 CONTAMINATED SOIL MANAGEMENT
- WM-8 CONCRETE WASTE MANAGEMENT
- WM-9 SANITARY/SEPTIC WASTE MANAGEMENT
- WM-10 LIQUID WASTE MANAGEMENT
2. FOR PROPER INSTALLATION OF THESE DEVICES CONSULT YOUR STORM WATER POLLUTION PREVENTION PLAN FOR DETAILS.
3. CONTRACTOR SHALL NOTE ON THIS PLAN THE LOCATIONS, IF ANY, WHERE MATERIALS ARE DIRECTLY EXPOSED TO STORM WATER.
4. CONTRACTOR SHALL INCLUDE THE REMOVAL AND ABANDONMENT OF THE EROSION CONTROL FACILITIES.
5. LOCATION OF BUILDING AND ACTIVITY AREAS (E.G. FUELING ISLANDS, WASTE CONTAINER AREA, WASH RACKS, ETC.) IS TO BE DETERMINED BY THE CONTRACTOR PRIOR TO START OF CONSTRUCTION AND ADDED TO THIS PLAN.
6. IT IS THE CONTRACTOR/SUPERVISOR/QUALIFIED SWPPP PRACTITIONER (OSP'S) RESPONSIBILITY TO KEEP THIS SWPPP MAP CURRENT. BMPS SHOULD BE ADDED, MOVED OR REMOVED BASED ON SITE CONDITIONS. HAND MARKED ALTERATIONS WITH INITIALS AND DATE ARE AN ACCEPTABLE FORM OF ALTERATION. THE CONTRACTOR MAY BE ASKED AT ANY TIME TO PRODUCE THIS SWPPP MAP. FAILURE TO KEEP THIS MAP CURRENT COULD RESULT IN A NOTICE OF VIOLATION AND/OR FINE.
7. THIS SWPPP EXHIBIT/WALL MAP IS PROVIDED AS AN EXHIBIT TO REFLECT CURRENT FIELD CONDITIONS. REFER TO FULL SWPPP DOCUMENT AND CONSTRUCTION GENERAL PERMIT FOR DETAILED INFORMATION REGARDING BMP IMPLEMENTATION AND MAINTAINING COMPLIANCE UNDER CALIFORNIA CONSTRUCTION GENERAL PERMIT.

DEWATERING OPERATIONS BMP (NS-2)

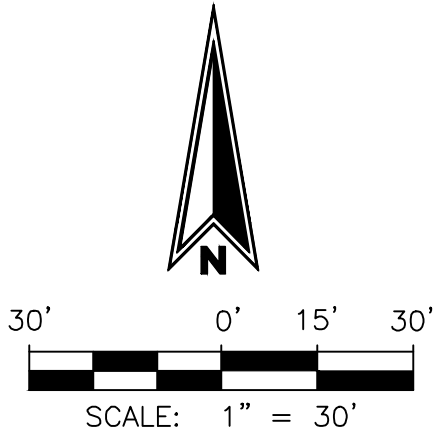
DEWATERING WILL OCCUR TO REMOVE EXCESS WATER WITHIN ANY UTILITY TRENCH EXCAVATION SITES THAT HAS BEEN PONDED FOR GREATER THAN 72 HOURS. DISCHARGES MUST ONLY CONSIST OF CLEAN STORM WATER. ANY PONDED WATER (GREATER THAN 72 HOURS) MAY BE PUMPED FROM THE TRENCH/EXCAVATION AREA TO A BAFFLE TANK SYSTEM, WEIR TANK, OR DEWATERING FILTER BAGS TO REMOVE TRASH, SETTLEABLE SOLIDS, AS WELL AS SOME METALS, OILS AND GREASE, IF NECESSARY, PRIOR TO DISCHARGING OFF-SITE. PERIODIC CLEANING IS REQUIRED BASED ON INSPECTIONS OR REDUCED FLOW, AND OIL & GREASE REMOVAL MUST BE DONE BY A LICENSED WASTE DISPOSAL COMPANY.

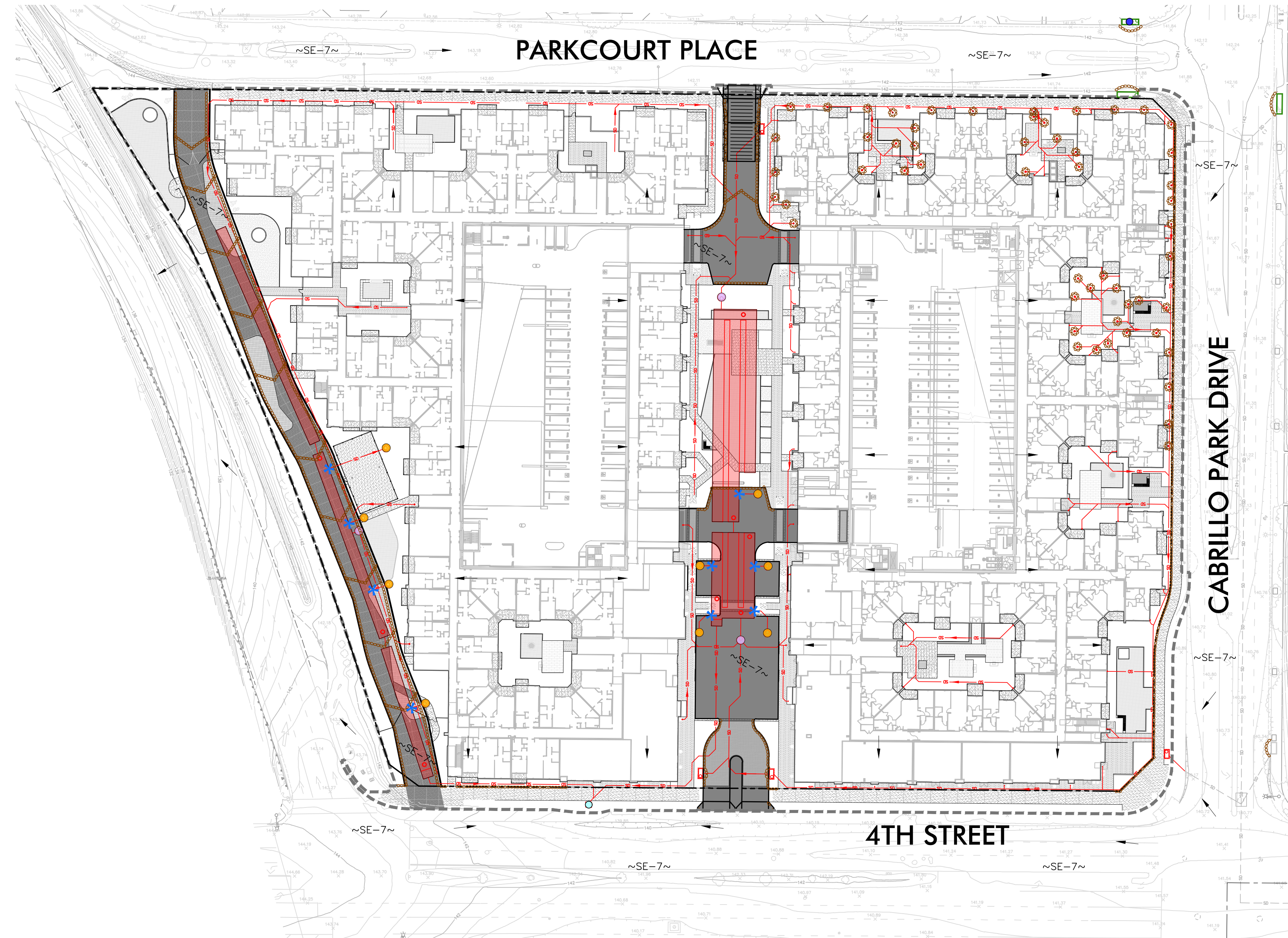
SOIL STABILIZATION BMPS

ANY INACTIVE PADS, EXCAVATED AREAS OR OTHER DISTURBED AREAS THAT WILL REMAIN INACTIVE FOR LONGER THAN 10 DAYS SHALL BE STABILIZED WITH HYDROSEED, HYDRAULIC MULCH, PLASTIC SHEETING (I.E. VISQUEEN ANCHORED WITH GRAVEL/SANDBAGS) OR EQUIVALENT EROSION CONTROL BMP. TEMPORARY SOIL STABILIZATION MEASURES SHALL BE MAINTAINED UNTIL PERMANENT STABILIZATION CAN BE ESTABLISHED.



VICINITY MAP
NOT TO SCALE





BMP LEGEND		
SYMBOL	CODE	DESCRIPTION
	TC-1/TC-2	STABILIZED CONSTRUCTION ROAD ENTRANCE/EXIT
	WM-1	WIND SCREEN/PERIMETER FENCE
	SE-4	CHECK DAMS
	SE-6	GRAVEL BAG BERM
	SE-7	STREET SWEEPING & VACUUMING
	SE-10	STORM DRAIN INLET PROTECTION
		ONSITE SAMPLING LOCATION (SEE SAMPLING NOTES HEREIN)
		OFFSITE SAMPLING LOCATION

BMP DETAILS CAN BE OBTAINED IN THE SWPPP PREPARED FOR THIS PROJECT BY FUSCOE ENGINEERING OR AT:
<https://ocerws.ocpublicworks.com/service-areas/oc-environmental-resources/oc-watersheds/unincorporated-countywide-compliance/best>

LEGEND	
	LIMIT OF WORK
	PROPERTY LINE/RIGHT OF WAY
	CENTERLINE
	EX CURB
	PROPOSED CURB
	PROPOSED STORM DRAIN
	EX STORM DRAIN
	EX SANITARY SEWER
	EX WATER LINE
	DIRECTION OF PIPED FLOW
	DIRECTION OF SURFACE FLOW
	TEMPORARY DEWATERING DRAIN (SEE DEWATERING NOTES HEREIN)
	PROPOSED DETENTION SYSTEM
	PROPOSED DRYWELL SYSTEM
	PROPOSED HYDRODYNAMIC SEPARATOR
	BULKHEAD INLET TO PROPOSED DRYWELL SYSTEM
	PAVED SURFACE

SAMPLING NOTES FOR RISK LEVEL 2

1. RISK LEVEL 2 – WATER QUALITY SAMPLING AND ANALYSIS
- A. RISK LEVEL 2 DISCHARGERS SHALL COLLECT STORM WATER GRAB SAMPLES FROM SAMPLING LOCATIONS, AS DEFINED BELOW. THE STORM WATER GRAB SAMPLE(S) OBTAINED SHALL BE REPRESENTATIVE OF THE FLOW AND CHARACTERISTICS OF THE DISCHARGE.
- B. AT MINIMUM, RISK LEVEL 2 DISCHARGERS SHALL COLLECT 3 SAMPLES PER DAY OF THE QUALIFYING EVENT.
- C. RISK LEVEL 2 DISCHARGERS SHALL ENSURE THAT THE GRAB SAMPLES COLLECTED OF STORED OR CONTAINED STORM WATER ARE FROM DISCHARGES SUBSEQUENT TO A QUALIFYING RAIN EVENT (PRODUCING PRECIPITATION OF 1/2 INCH OR MORE AT THE TIME OF DISCHARGE).
- STORM WATER EFFLUENT MONITORING REQUIREMENTS
- D. RISK LEVEL 2 DISCHARGERS SHALL ANALYZE THEIR EFFLUENT SAMPLES FOR:
- i. PH AND TURBIDITY
- ii. ANY ADDITIONAL PARAMETERS FOR WHICH MONITORING IS REQUIRED BY THE REGIONAL WATER BOARD.
2. RISK LEVEL 2 – STORM WATER DISCHARGE WATER QUALITY SAMPLING LOCATIONS
- EFFLUENT SAMPLING LOCATIONS
- A. RISK LEVEL 2 DISCHARGERS SHALL PERFORM SAMPLING AND ANALYSIS OF STORM WATER DISCHARGES TO CHARACTERIZE DISCHARGES ASSOCIATED WITH CONSTRUCTION ACTIVITY FROM THE ENTIRE PROJECT DISTURBED AREA.
- B. RISK LEVEL 2 DISCHARGERS SHALL COLLECT EFFLUENT SAMPLES AT ALL DISCHARGE POINTS WHERE STORM WATER IS DISCHARGED OFF-SITE. C. RISK LEVEL 2 DISCHARGERS SHALL ENSURE THAT STORM WATER DISCHARGE COLLECTED AND OBSERVED REPRESENT THE EFFLUENT IN EACH DRAINAGE AREA BASED ON VISUAL OBSERVATION OF THE WATER AND UPSTREAM CONDITIONS.
- C. RISK LEVEL 2 DISCHARGERS SHALL MONITOR AND REPORT SITE RUN-ON FROM SURROUNDING AREAS IF THERE IS REASON TO BELIEVE RUN-ON MAY CONTRIBUTE TO AN EXCEEDANCE OF NALS OR NELS.
- D. RISK LEVEL 2 DISCHARGERS WHO DEPLOY AN ATS ON THEIR SITE, OR A PORTION ON THEIR SITE, SHALL COLLECT ATS EFFLUENT SAMPLES AND MEASUREMENTS FROM THE DISCHARGE PIPE OR ANOTHER LOCATION REPRESENTATIVE OF THE NATURE OF THE DISCHARGE.
- E. RISK LEVEL 2 DISCHARGERS SHALL SELECT ANALYTICAL TEST METHODS AS STATED IN THE CALIFORNIA GENERAL CONSTRUCTION PERMIT.
- F. ALL STORM WATER SAMPLE COLLECTION PRESERVATION AND HANDLING SHALL BE CONDUCTED IN ACCORDANCE WITH "STORM WATER SAMPLE COLLECTION AND HANDLING INSTRUCTIONS" BELOW.
3. RISK LEVEL 2 – VISUAL OBSERVATION AND SAMPLE COLLECTION EXEMPTIONS
- A. RISK LEVEL 2 DISCHARGERS SHALL BE PREPARED TO COLLECT SAMPLES AND CONDUCT VISUAL OBSERVATION (INSPECTIONS) UNTIL THE MINIMUM REQUIREMENTS AS STATED ABOVE ARE COMPLETED. RISK LEVEL 2 DISCHARGERS ARE NOT REQUIRED TO PHYSICALLY COLLECT SAMPLES OR CONDUCT VISUAL OBSERVATION (INSPECTIONS) UNDER THE FOLLOWING CONDITIONS:
- i. DURING DANGEROUS WEATHER CONDITIONS SUCH AS FLOODING AND ELECTRICAL STORMS.
- ii. OUTSIDE OF SCHEDULED SITE BUSINESS HOURS.
- B. IF NO REQUIRED SAMPLES OR VISUAL OBSERVATION (INSPECTIONS) ARE COLLECTED DUE TO THESE EXCEPTIONS, RISK LEVEL 2 DISCHARGERS SHALL INCLUDE AN EXPLANATION IN THEIR SWPPP AND IN THE ANNUAL REPORT DOCUMENTING WHY THE SAMPLING OR VISUAL OBSERVATION (INSPECTIONS) WERE NOT CONDUCTED.

NOTES

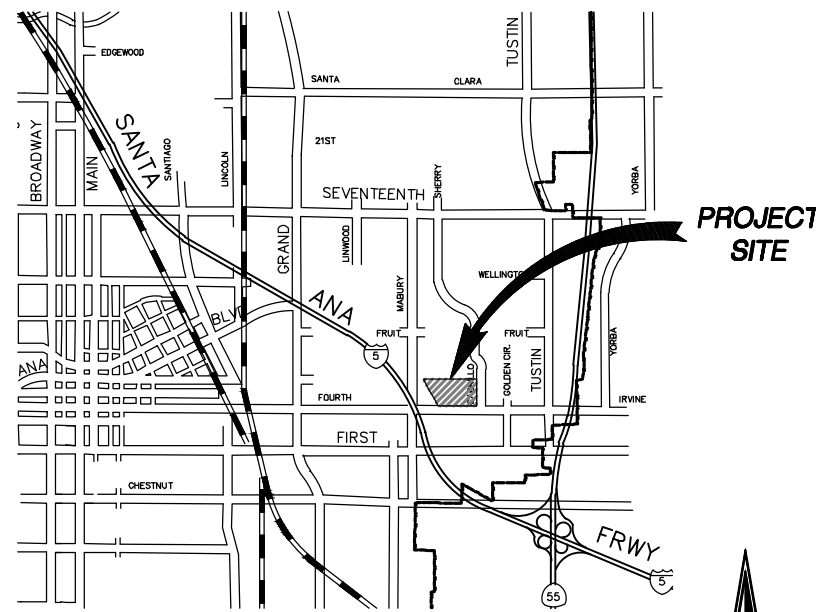
1. IN ADDITION TO THE BMPS SHOWN ON THIS PLAN, THE CONTRACTOR SHALL PRACTICE "GOOD HOUSEKEEPING" POLICIES PURSUANT TO THE FOLLOWING DETAILS:
- EC-1 SCHEDULING
- EC-2 PRESERVATION OF EXISTING VEGETATION
- WE-1 WIND EROSION CONTROL
- NS-6 ILLICIT CONNECTION/DISCHARGE
- NS-7 POTABLE WATER/IRRIGATION
- NS-8 VEHICLE AND EQUIPMENT CLEANING
- NS-9 VEHICLE AND EQUIPMENT FUELING
- NS-10 VEHICLE AND EQUIPMENT MAINTENANCE
- NS-12 CONCRETE CURING
- NS-13 CONCRETE FINISHING
- WM-1 MATERIAL DELIVERY AND STORAGE
- WM-2 MATERIAL USE
- WM-3 STOCKPILE MANAGEMENT
- WM-4 SPILL PREVENTION AND CONTROL
- WM-5 SOLID WASTE MANAGEMENT
- WM-6 HAZARDOUS WASTE MANAGEMENT
- WM-7 CONTAMINATED SOIL MANAGEMENT
- WM-8 CONCRETE WASTE MANAGEMENT
- WM-9 SANITARY/SEPTIC WASTE MANAGEMENT
- WM-10 LIQUID WASTE MANAGEMENT
2. FOR PROPER INSTALLATION OF THESE DEVICES CONSULT YOUR STORM WATER POLLUTION PREVENTION PLAN FOR DETAILS.
3. CONTRACTOR SHALL NOTE ON THIS PLAN THE LOCATIONS, IF ANY, WHERE MATERIALS ARE DIRECTLY EXPOSED TO STORM WATER.
4. CONTRACTOR SHALL INCLUDE THE REMOVAL AND ABANDONMENT OF THE EROSION CONTROL FACILITIES.
5. LOCATION OF BUILDING AND ACTIVITY AREAS (E.G. FUELING ISLANDS, WASTE CONTAINER AREA, WASH RACKS, ETC.) IS TO BE DETERMINED BY THE CONTRACTOR PRIOR TO START OF CONSTRUCTION AND ADDED TO THIS PLAN.
6. IT IS THE CONTRACTOR/SUPERVISOR/QUALIFIED SWPPP PRACTITIONER (QSP'S) RESPONSIBILITY TO KEEP THIS SWPPP MAP CURRENT. "BMPS SHOULD BE ADDED, MOVED OR REMOVED BASED ON SITE CONDITIONS. HAND MARKED ALTERATIONS WITH INITIALS AND DATE ARE AN ACCEPTABLE FORM OF ALTERATION. THE CONTRACTOR MAY BE ASKED AT ANY TIME TO PRODUCE THIS SWPPP MAP. FAILURE TO KEEP THIS MAP CURRENT COULD RESULT IN A NOTICE OF VIOLATION AND/OR FINE.
7. THIS SWPPP EXHIBIT/WALL MAP IS PROVIDED AS AN EXHIBIT TO REFLECT CURRENT FIELD CONDITIONS. REFER TO FULL SWPPP DOCUMENT AND CONSTRUCTION GENERAL PERMIT FOR DETAILED INFORMATION REGARDING BMP IMPLEMENTATION AND MAINTAINING COMPLIANCE UNDER CALIFORNIA CONSTRUCTION GENERAL PERMIT.

DEWATERING OPERATIONS BMP (NS-2)

DEWATERING WILL OCCUR TO REMOVE EXCESS WATER WITHIN ANY UTILITY TRENCH EXCAVATION SITES THAT HAS BEEN PONDED FOR GREATER THAN 72 HOURS. DISCHARGES MUST ONLY CONSIST OF CLEAN STORM WATER. ANY PONDED WATER (GREATER THAN 72 HOURS) MAY BE PUMPED FROM THE TRENCH/EXCAVATION AREA TO A BAFFLE TANK SYSTEM, WEIR TANK, OR DEWATERING FILTER BAGS TO REMOVE TRASH, SETTLEABLE SOLIDS, AS WELL AS SOME METALS, OILS AND GREASE, IF NECESSARY, PRIOR TO DISCHARGING OFF-SITE. PERIODIC CLEANING IS REQUIRED BASED ON INSPECTIONS OR REDUCED FLOW, AND OIL & GREASE REMOVAL MUST BE DONE BY A LICENSED WASTE DISPOSAL COMPANY.

SOIL STABILIZATION BMPS

ANY INACTIVE PADS, EXCAVATED AREAS OR OTHER DISTURBED AREAS THAT WILL REMAIN INACTIVE FOR LONGER THAN 10 DAYS SHALL BE STABILIZED WITH HYDROSEED, HYDRAULIC MULCH, PLASTIC SHEETING (I.E. VISQUEEN ANCHORED WITH GRAVEL/SANDBAGS) OR EQUIVALENT EROSION CONTROL BMP. TEMPORARY SOIL STABILIZATION MEASURES SHALL BE MAINTAINED UNTIL PERMANENT STABILIZATION CAN BE ESTABLISHED.



VICINITY MAP
NOT TO SCALE

